

SUPPORT BRACKET

» 521-111

Commercial Combo Bracket™

ITEM # SUBMITTED	_____
JOB NAME	_____
LOCATION	_____
ENGINEER	_____
CONTRACTOR	_____
PO#	_____ TAG _____

SPECIFICATION

Sioux Chief's Combo bracket is designed to support 1/2" or 3/4" CTS supply lines vertically or horizontally in commercial or residential applications. The Combo bracket is a pipe-on-pipe bracket that shall be secured to horizontal waste pipe or vertical stack pipe using a stainless steel band (provided). Bracket shall fit within a 3 1/2" wall. Self-adhesive isolating felt (provided) shall be applied to the waste or vent pipe prior to securing the bracket. Bracket shall feature notches for water supplies, lavatories, or other fixtures.

Bracket shall be made from 16-gauge copper-plated steel with a corrosion-resistant clear finish. Extruded 1/2" notches with 1" centers position tube on 4", 6" and 8" center lines. Extruded 3/4" notches 2" centers position tube on 4" and 8" center lines. Extruded notches provide greater tube-to-surface contact when soldering. Where plastic supply lines might be used, pipe should be snapped into appropriate notch then secured using nylon cable zip tie. Bracket shall be IAPMO certified.



INSTALLATION

Wrap waste or vent pipe with isolating, self-adhesive felt. Place bracket hub on top of felt and secure to pipe using stainless steel band. Insert copper tube stub out into desired notch on bracket and solder. Heat should be applied to copper tube, not bracket. When installing plastic tubing, snap pipe into notch then secure pipe using nylon cable zip tie.

MATERIALS

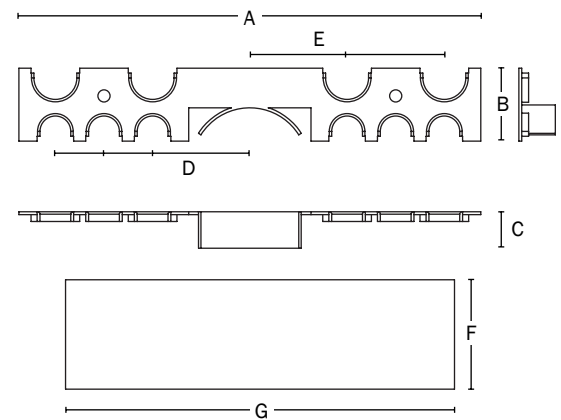
Bracket: 18-gauge copper-plated steel

Band: 4" max diameter, 300 series stainless steel, 1/2" wide x 0.025 thick, 410 series slotted/hex head screw

Felt: 2 1/4" x 8" self-adhesive

DIMENSIONS

A: Length	9.5"
B: Height	1.5"
C: Depth	0.75"
D: 1/2" notch offset from center	2", 3", 4" on-center
E: 3/4" notch offset from center	2", 4" on-center
F: Felt pad height	2 1/4"
G: Felt pad width	8"



Made in China

Item Number

521-111